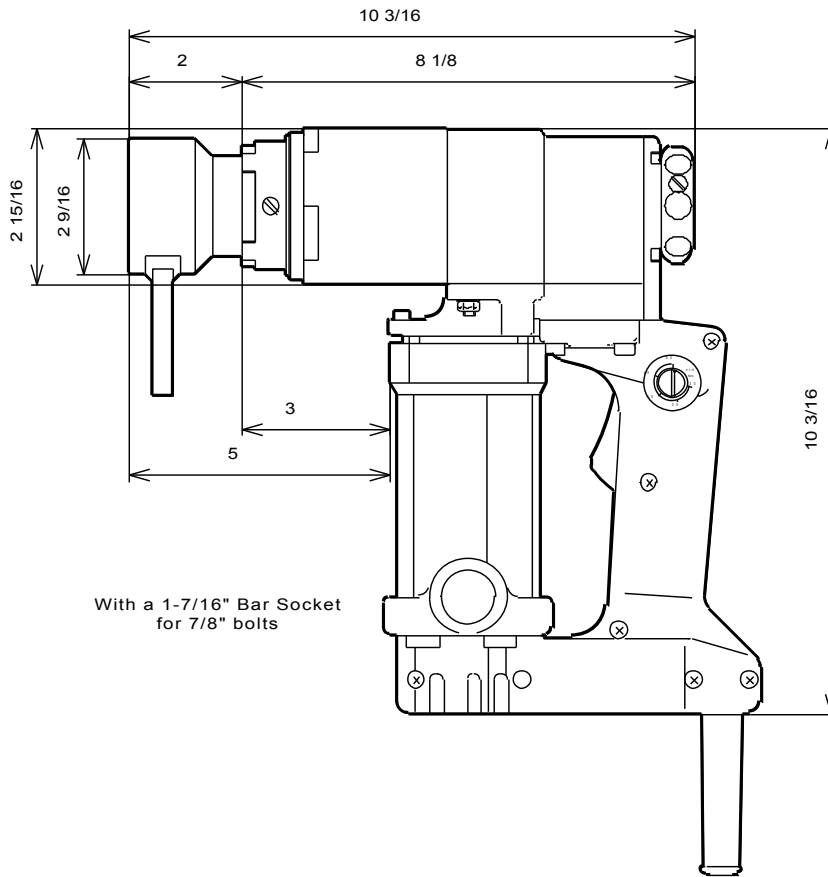


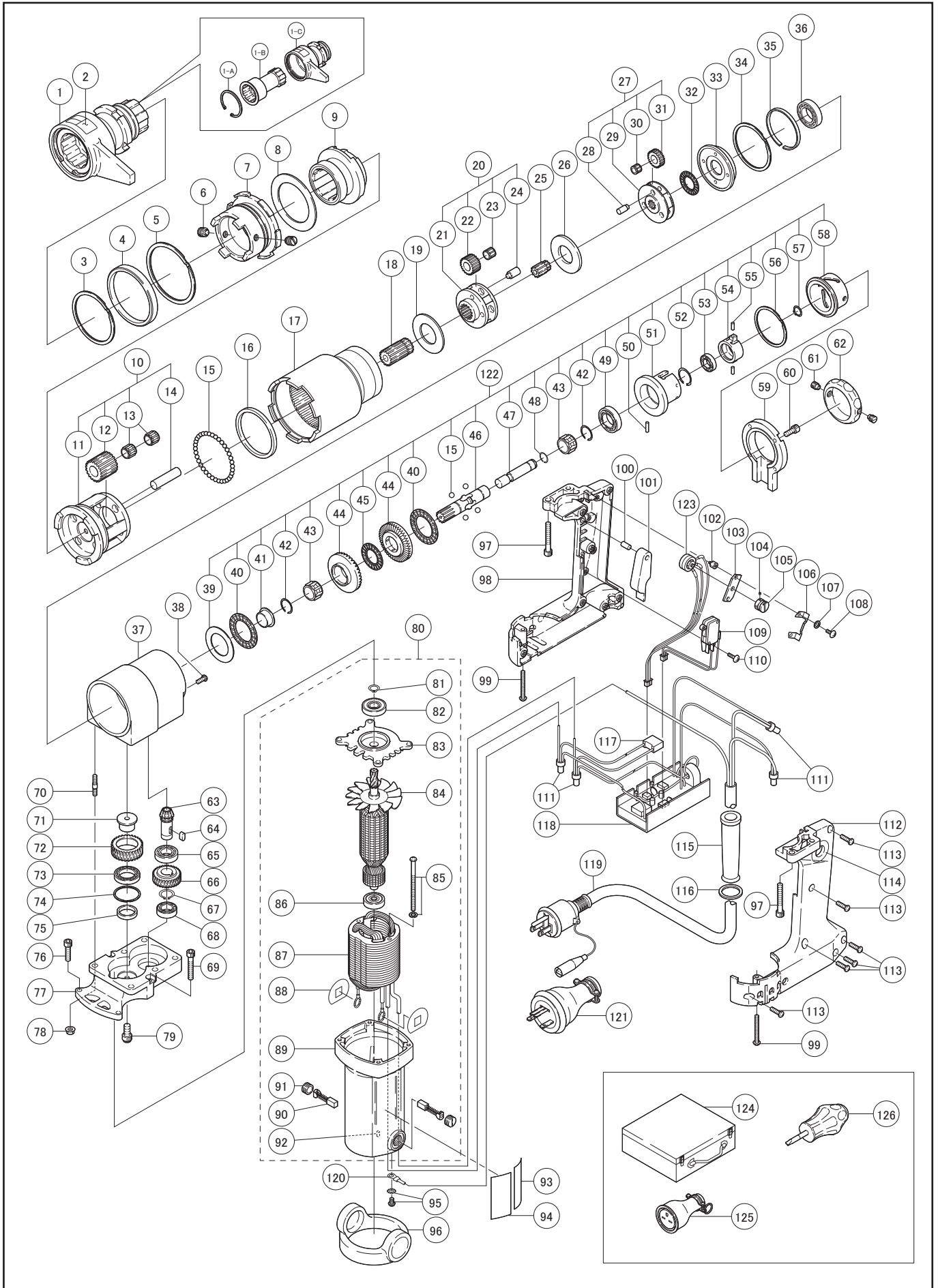
Model SR71E

Specification & Dimensions (Inch)



LeJeune Bolt Company		Accessories & Sockets
Model	SR71E	(1) Screw Driver (1) Metal Case (1) Instruction Manual (1) Bar Socket
Frequency	50-60Hz	Available Bar Sockets MRU27T - 5/8" MRU32T - 3/4" MRUB46Z - 7/8" MRU41T - 1"
Voltage	115V	
Max. Current	13.5A	
Max. Power	1100W	
Rated Max. Torque	520ft.lbs.	
Controllable Torque	260 ft.lbs. ~ 520 ft.lbs.	
Repeated Accuracy	±5%	
Rated No-load Speed	17min ⁻¹	
Noise Vibration Level	Sound Pressure Level 84dB(A), Sound Power Level 95dB(A) Vibration Level 2.5m/s ² or below	
Fully Tensioned	A325 - 3/4", 7/8" / A490 - 3/4"	
Snug Tight	A325 - 1" / A490 - 7/8, 1"	
Weight	12.1 lbs.	
Extension cord	Refer to Instruction Manual	LeJeune Bolt Company 3500 West Highway 13, Burnsville, MN 55337 800-872-2658
Product Identification	As Rating Plate	3655 Placentia Court, Chino, CA 91710 877-684-4091
Remarks	Warm up procedure with no-load should be carried out at least 5 minutes before operation.	www.lejeunebolt.com www.tightenright.com

TONE TONE CO., LTD.



PART NO.	USE	DESCRIPTION	Qty
SR71/3		Spirolox RS-225	1
SR71/4		Spiro Stopper	1
SR71/5	S80/34	Spirolox FRR-68	1
SR71/6	S60/8	Set Screw	2
SR71/7		Outer Socket Holder	1
SR71/8		Bush 48 X 67.7 X 2	1
SR71/9		Inner Socket Holder Assembly	1
SR71/11		3rd Cage	1
SR71/12		3rd Idle Gear	4
SR71/13	S80/10	Needle Cage KT101412	8
SR71/14		3rd Gear Pin	4
SR71/15	S60/14	Steel Ball 7/32"	39
SR71/16		Bush 60 X 67.5 X 4	1
SR71/17		Internal Gear	1
SR71/18		3rd Pinion Gear	1
SR71/19	60/22	Bush 24 X 45 X 2	1
SR71/21		2nd Cage	1
SR71/22		2nd Idle Gear	4
SR71/23		Needle Cage KT81110	4
SR71/24		2nd Gear Pin	4
SR71/25		2nd Pinion Gear	1
SR71/26		Bush 21 X 43 X 2.5	1
SR71/27	S60/30	1st Idle Gear Assembly	1
SR71/32	S60/35	Metal Sleeve NTB1528	1
SR71/33		Friction Disk	1
SR71/34	S60/38	Spirolox RR-206	1
SR71/35		Spiro Washer	1
SR71/36	S60/37	Metal Sleeve 6903	1
SR71/37		Housing	1
SR71/38		CRPH Screw M4 X 10	4
SR71/39	S110/38	Thrust Washer AS2542	1
SR71/40	S110/37	Metal Sleeve NTB2542	2
SR71/41		Stepped Bush 14.55 X 22 X 8.3	1
SR71/42		Circlip IKO WR15	2
SR71/43		Needle Cage KT151910	2
SR71/44		Bevel Gear	2
SR71/45		Metal Sleeve NTB1831	1
SR71/46		1st Pinion Gear	1
SR71/47		Change Spool	1
SR71/48	S80/57	Circlip IKO WR10	1
SR71/49		Metal Sleeve 6902	1
SR71/50		Needle Pin 3 X 11.8A	1
SR71/51		Spool Guide	1
SR71/52		Retaining Ring C-Type IRTW-19	1
SR71/53		Metal Sleeve 6800	1
SR71/54		Spool Holder	1
SR71/55		Guide Pin	2
SR71/56		Spirolox FRR-45	1
SR71/57	S90/57	Retaining Ring C-Type Dia 10	1
SR71/58		Change Drum	1
SR71/59		Housing Cover	1
SR71/60		HSH Bolt M4 X 12	4
SR71/61		Click Plunger Assembly	2
SR71/62		Change Grip	1
SR71/63	S60/50	Pinion Bevel Gear	1

PART NO.	USE	DESCRIPTION	Qty
SR71/64	S60/51	Key	1
SR71/65	S60/52	Metal Sleeve 6901	1
SR71/66		Motor Gear	1
SR71/67	S60/54	Retaining Ring C-Type Dia 12	1
SR71/68		Metal Sleeve 6801	1
SR71/69		HSH Bolt M4 X 30	2
SR71/70	S60/56	Stud Bolt	2
SR71/71		Idle Pin	1
SR71/72		Motor Idle Gear	1
SR71/73		Metal Sleeve 6803	1
SR71/74		Spirolox FRR-26	1
SR71/75		Bush 17 X 21 X 3.9	1
SR71/76		HSH Bolt M4 X 20	2
SR71/77		Bracket	1
SR71/78	S60/63	E-Nut M5	2
SR71/79		HSH Button Bolt M5 X 12	1
SR71/80	S60/68	Motor Assembly 115V	1
SR71/81	S60/69	Retaining Ring C-Type Dia 9	1
SR71/82	S60/70	Metal Sleeve 629DD	1
SR71/83	S60/71	Metal Sleeve Bracket	1
SR71/84	S60/72	Armature 115V	1
SR71/85		CRPH Screw M4 X 65 W/H Washer	2
SR71/86	S60/74	Metal Sleeve 627ZZ	1
SR71/87	S60/75	Stator 115V	1
SR71/88	S60/76	Insulating Washer	2
SR71/89	S60/77	Stator Spider Assembly 115V	1
SR71/90	S60/78	Carbon Brush	2
SR71/91	S60/79	Brush Cap	2
SR71/92	S60/80	Rubber Plug	1
SR71/95		CRPH Screw M4 X 6 W/H Washer	1
SR71/96	S60/83	Cushion Rubber	1
SR71/97		HSH Bolt M5 X 35	4
SR71/98		Grip	1
SR71/99		CRPH Screw M4 X 35	2
SR71/100		Pin H7B 5 X 18	1
SR71/101		Switch Lever	1
SR71/102		Spacer SQ-5	2
SR71/103		Set Board	1
SR71/104		HSH Set Screw M2.6 X 3	2
SR71/105		Dial	1
SR71/106		Set Spring	1
SR71/107		Spring Washer M3	2
SR71/108		CRPH Screw M3 X 6	2
SR71/109		Trigger Switch V-215-1Cl6	1
SR71/110		CRPH Screw M3 X 14	2
SR71/112		Grip Cover	1
SR71/113		CRPH Screw M4 X 14	7
SR71/114		Graduation lbf.ft	1
SR71/115	S60/98	Cord Armour	1
SR71/116	S60/99	Cord Armour Washer	1
SR71/117	S60/91	Condenser PAB 104	1
SR71/118		Control Base Assembly 115V	1
SR71/119	S60/102	Cord	1
SR71/123		Volume Assembly RV16YN	1
SR71/124		Metal Case	1

ANY PART NOT LISTED IS A COMPONENT OF AN ASSEMBLY AND IS NOT SOLD SEPARATELY