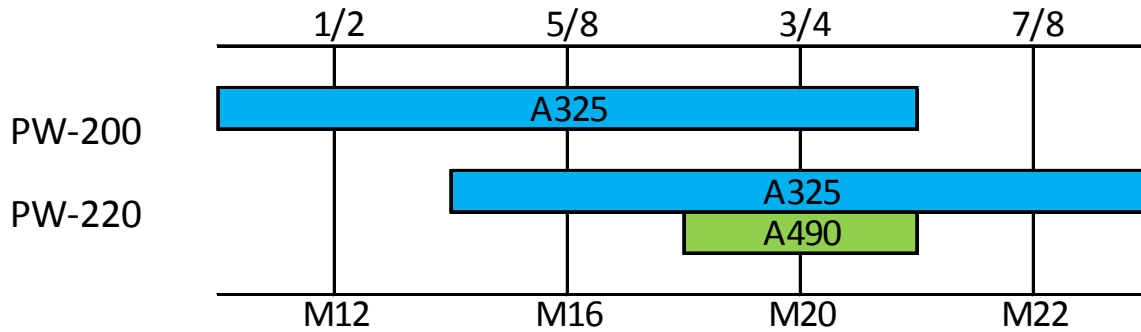




PW220 PNEUMATIC SHEAR WRENCH



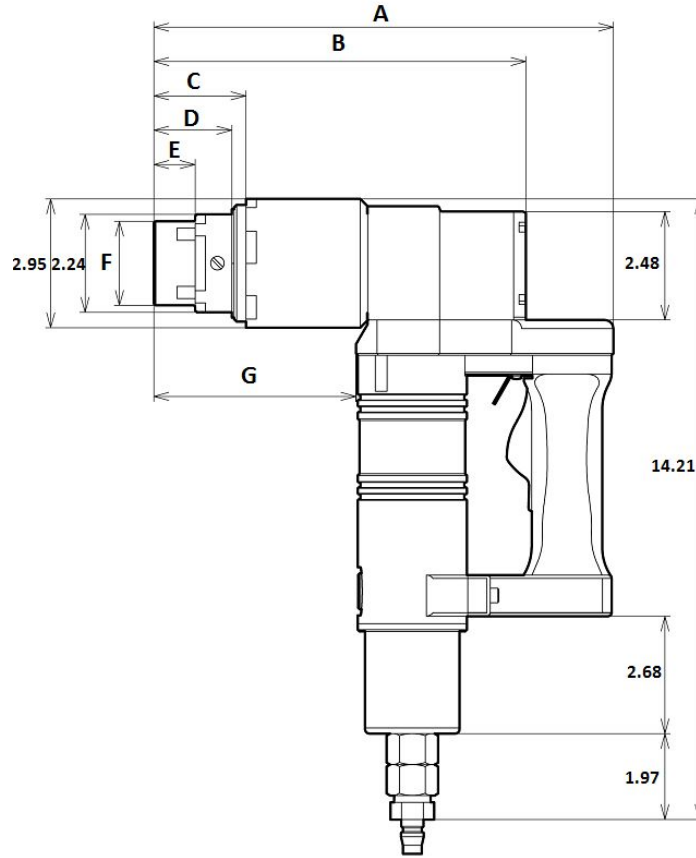
Diameter Capacity by Grade



TOOL SPECIFICATIONS

MODEL	Maximum Torque	No-Load Rotation	Sound Pressure Level	Maximum Pressure	Maximum Air Consumption	Hose Size	Service Life Cycle	Operating Ambient Temperature	Weight
PW220	450ft.lbs	50 rpm	*85dB(A)	90psi	42CFM	1/2"	30,000	32° F to 122° F	13.86lbs

* Measured at a distance of 1m from the geometric center of tool



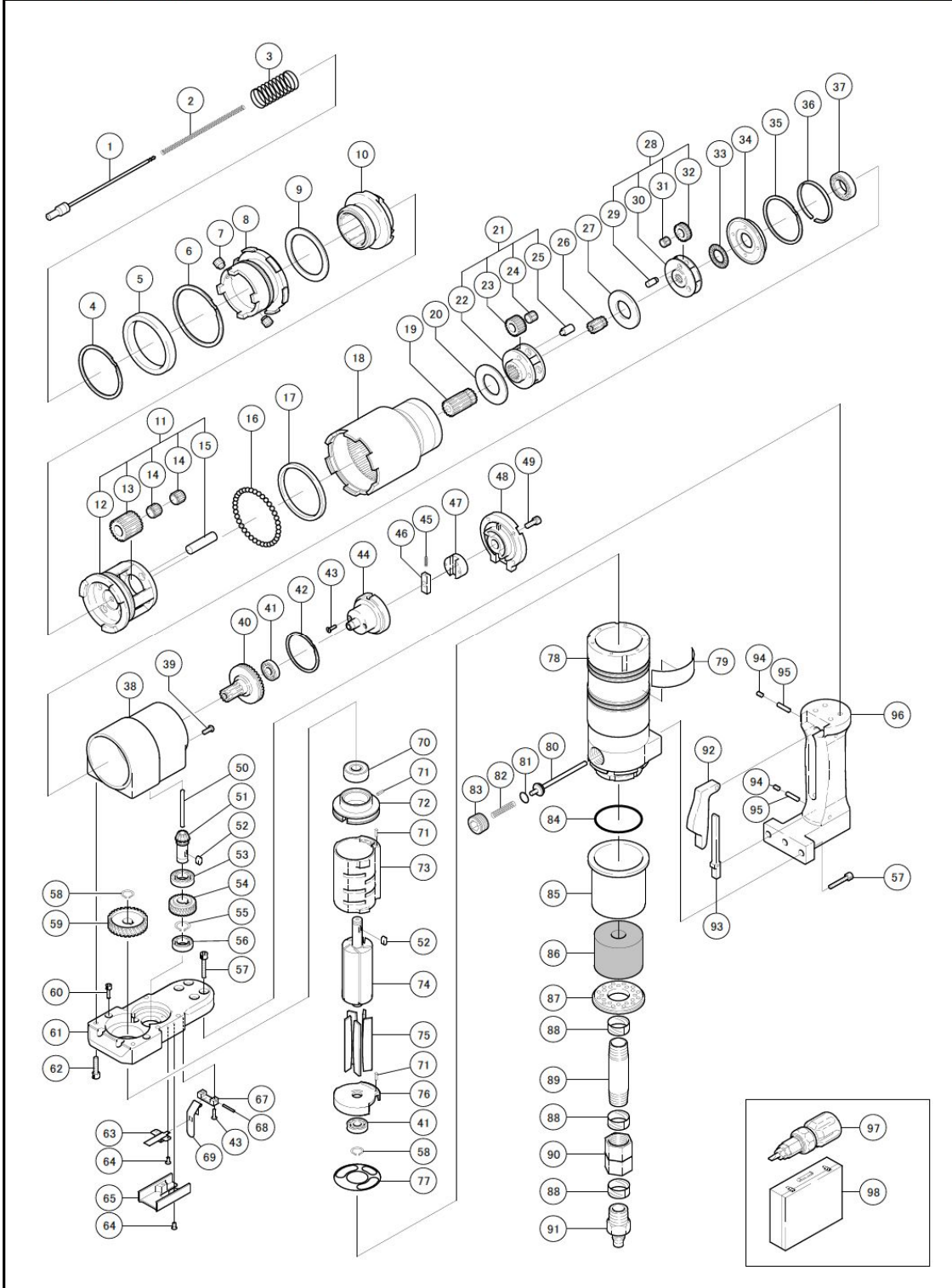
PW220 DIMENSIONAL INFORMATION							
Socket Size	A	B	C	D	E	F	G
1/2"	10.15	8.25	1.77	1.41	0.58	1.38	4.35
5/8"	10.30	8.33	1.92	1.56	0.73	1.54	4.44
3/4"	10.46	8.50	2.06	1.72	0.87	1.81	4.60
7/8"	10.51	8.54	2.13	1.77	0.94	1.93	4.65
M16	10.54	8.57	2.16	1.80	0.97	1.50	4.70
M16 Ext	13.51	11.54	5.13	4.77	3.94	1.50	7.65
M16 Ext 1.375 OD	13.51	11.54	5.13	4.77	3.94	1.38	7.65
M20	10.50	8.56	2.07	1.71	0.88	1.79	4.63

* All dimensions are in inches



■ Assembly Drawing

[No.1204]



3500 West Highway 13, Burnsville, MN 55337 | 800.872.2658
3655 Placentia Court, Chino, CA 91710 | 877.684.4091
sales@lejeunebolt.com | www.lejeunebolt.com



No. 1204-PA00

Item ID	Use	Description	Qty
PW220-1A		PW220 Ejector Pin M16, M20, 5/8, 3/4 & 7/8	1
PW220-1B		PW220 Ejector Pin 1/2	1
PW220-1C		PW220 Ejector Pin M16 EXT 100MM	1
PW220-2	PW200-2	Ejector Spring	1
PW220-3	PW200-3	Inner Socket Spring	1
PW220-4	SR71/3	Spirolox RS-225	1
PW220-5	SR71/4	Spiro Stopper	1
PW220-6	S80/34	Spirolox FRR-68	1
PW220-7	S60/8	Set Screw	2
PW220-8	SR71/7	Outer Socket Holder	1
PW220-9	SR71/8	Thrust Washer	1
PW220-10	SR71/9	Inner Socket Holder Assy	1
PW220-12	SR71/11	3rd Cage	1
PW220-13	SR71/12	3rd Idle Gear	4
PW220-14	S80/10	Needle Cage KT101412	8
PW220-15	SR71/14	3rd Gear Pin	4
PW220-16	S60/14	Steel Ball 7/32	35
PW220-17	SR71/16	Ball Washer	1
PW220-18	SR71/17	Internal Gear	1
PW220-19	SR71/18	3rd Pinion Gear	1
PW220-20	S60/22	2nd Thrust Metal	1
PW220-22	SR71/21	2nd Cage	1
PW220-23	SR71/22	2nd Idle Gear	4
PW220-24	SR71/23	Needle Cage KT81110	4
PW220-25	SR71/24	2nd Gear Pin	4
PW220-26	SR71/25	2nd Pinion Gear	1
PW220-27	SR71/26	1st Thrust Metal	1
PW220-28	S60/30	1st Idle Gear Assembly (29-32)	1
PW220-33	S60/35	Bearing	1
PW220-34	SR71/33	Friction Disk	1
PW220-35	S60/38	Spirolox RR-206	1
PW220-36	SR71/35	Spiro Washer	1
PW220-37	S60/37	Bearing	1
PW220-38	PW200-39	Housing	1
PW220-39		CRPH Screw M4 x 10	4
PW220-40		1st Pinion Gear	1
PW220-41	S60/43	Bearing	2
PW220-42	SR71/56	Spirolox FRR-45	1
PW220-43		CRPH Screw M3 x 10	4
PW220-44	PW200-45	Ejector Bracket	1
PW220-45	S60/45	Latch Spring	1
PW220-46	S60/46	Latch	1
PW220-47	PW200-48	Latch Guide	1
PW220-48	PW200-49	Housing Cover	1
PW220-49		HSH Bolt M4 x 12	4
PW220-50	PW200-51	Push Rod	1
PW220-51	S60/50	Pinion Bevel Gear	1

Item ID	Use	Description	Qty
PW220-52	S60/51	Key	2
PW220-53	S60/52	Bearing	1
PW220-54	PW200-55	Motor Gear	1
PW220-55	S60/54	Retaining Ring C-Type 12mm	1
PW220-56	SR71/68	Bearing	1
PW220-57		HSH Bolt M5 x 25	6
PW220-58	S90/59	Retaining Ring C-Type 10mm	1
PW220-59	PW200-60	Motor Idle Gear	1
PW220-60		HSH Bolt M4 x 12	6
PW220-61	PW200-62	Bracket	1
PW220-62		HSH Bolt M5 x 20	6
PW220-63	PW200-64	Beam Bracket	1
PW220-64		CRPH Screw M3 x 6	2
PW220-65	PW200-66	Bracket Cover	1
PW220-67	PW200-68	Lever Bracket	1
PW220-68	PW200-69	Needle Roller	1
PW220-69	PW200-70	Ejector Lever	1
PW220-70	PW200-71	Bearing 6000ZZ	1
PW220-71	PW200-72	Spring Pin	3
PW220-72	PW200-73	Front End Plate	1
PW220-73	PW200-74	Cylinder	1
PW220-74	PW200-75	Rotor	1
PW220-75	PW200-76	Rotor Vane	5
PW220-76	PW200-77	Rear End Plate	1
PW220-77A	PW200-78A	Gasket 0.8MM	1
PW220-77B	PW200-78B	Gasket 0.5MM (Optional)	-
PW220-78	PW200-79	Motor Housing	1
PW220-79		Rating Plate	1
PW220-80	PW200-81	Throttle Valve	1
PW220-81	PW200-82	O-Ring P-10A	1
PW220-82	PW200-83	Spring 5085	1
PW220-83	PW200-84	Flush Plug	1
PW220-84	PW200-85	O-Ring G45	1
PW220-85	PW200-86	Muffler Housing	1
PW220-86	PW200-87	Internal Muffler Pack	1
PW220-87	PW200-88	Muffler End Plate	1
PW220-88		Pipe Tape (Not For Sale)	-
PW220-89	PW200-90	Pipe Nipple 1/2 x 75MM	1
PW220-90	PW200-91	Muffler Nut Adapter 1/2 YST-2	1
PW220-91	PW200-92	Air Inlet Fitting	1
PW220-92	PW200-93	Switch Lever	1
PW220-93	PW200-94	Switch Link Bar	1
PW220-94	PW200-95	Flat End HSH Set Screw M5 x 6	2
PW220-95	PW200-96	Pin B-Type 4 x 16	2
PW220-96	PW200-97	Grip	1
PW220-97	PW200-98	Screw Driver	1
PW220-98	PW200-99	Metal Case	1

3500 West Highway 13, Burnsville, MN 55337 | 800.872.2658
 3655 Placentia Court, Chino, CA 91710 | 877.684.4091
 sales@lejeunebolt.com | www.lejeunebolt.com



⚠ CAUTION

- **Supply dry air below 10°C (50°F).**

Air supply over 10°C (50°F) may result in malfunction or deficiency in wrench performance.

- **Use a quality filter to remove dirt.**

Not using filter may result in accident, malfunction or deficiency in wrench performance.

- **Use a quality regulator for proper air pressure setting.**

Air pressure must be at 0.6 Mpa (90psi).

Improper pressure setting may result in accident, malfunction or deficiency in performance.

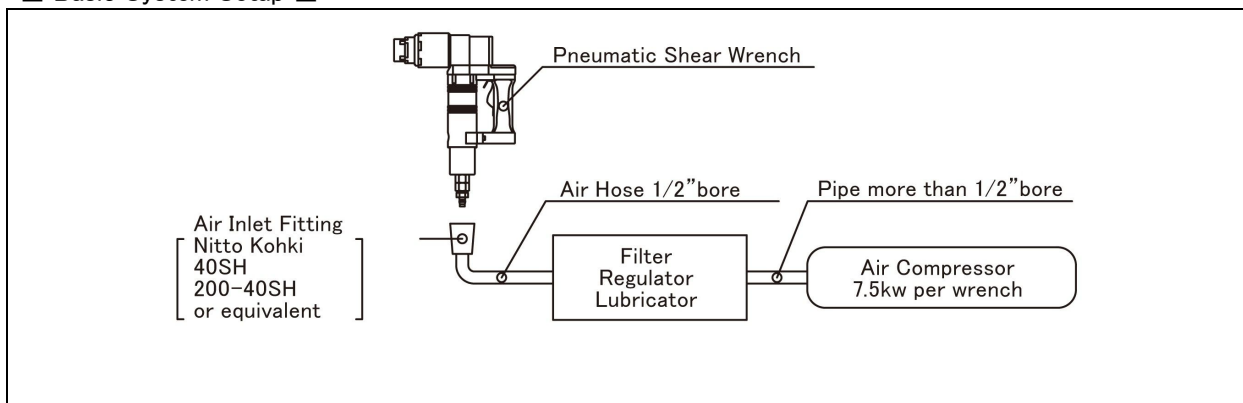
- **Use a quality lubricator to feed air motor oil into pneumatic wrench.**

Use additive-free turbine oil ISO VG32 or equivalent.

Feed 5 drops per minute.

Insufficient lubrication will invite air motor seizing, accident, malfunction or deficiency in wrench performance.

■ Basic System Setup ■



Overhaul must be carried out every **6 months** or **30,000 tightenings**, whichever comes first.